

**East Providence District Wide Improvements**

**Community Meeting**

**October 12, 2022**

**EPHS Auditorium**

**6:00 p.m.**



**PRIDE IN OUR SCHOOLS  
COMMITMENT TO OUR COMMUNITY**

# The Opportunity

The State of Rhode Island has initiated a second round of the **School Construction Program** to continue transformation and replacement inadequate public school buildings throughout the state. The first round supported projects like the new **East Providence High School**.

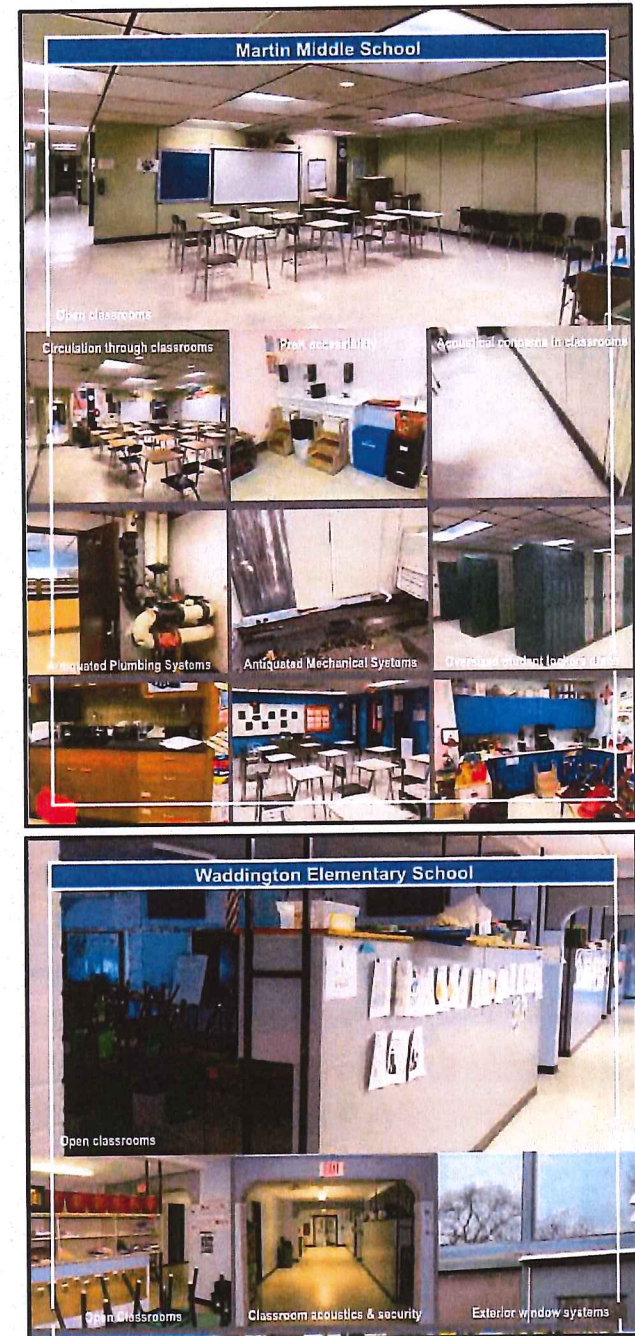
**In the Fall of 2021**, The Rhode Island Department of Education (RIDE) encouraged the community to evaluate improvements to **Martin Middle School** based on significant need and pending reductions in reimbursement and incentives. This initiated a broader look at the entire District with a focus on **Waddington Elementary** and other facilities. Subject to approval, RIDE will reimburse a proportion of the total cost to help finance the project.





# The Need

- Most classrooms in Martin MS and some in Waddington ES are open concept
  - Circulation through classes
  - Acoustical issues
  - Accessibility concerns
  - All these impact the learning environment
- Antiquated Mechanical, Electrical and Plumbing (MEP) Systems
- Envelope Conditions
  - Roofing
  - Windows
  - Masonry



# The Need

- District-Wide Assessment for 5-Year Capital Improvement Plan – Required by RIDE but not included in Bond
  - Upgrade HVAC
  - Roof Replacement
  - Window Replacement
  - Upgraded Electrical
  - Site Repairs and Upgrades
  - Code Compliance and Accessibility

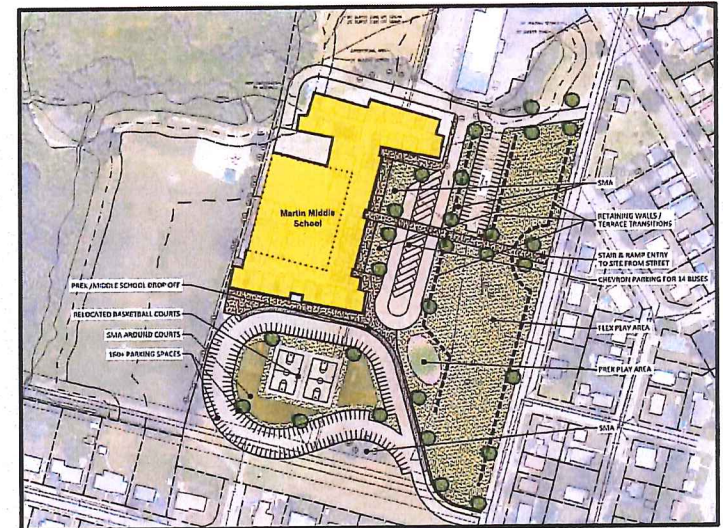


# The Scope – Martin Middle School

- New 147,000 square foot Classroom Wings for grades 6-8 and Pre-K
- Renovation of Commons Core – Auditorium and Gymnasium
- Opening 2026-2027 School Year

## Features:

- Flexible, adaptable and collaborative project-based teaching and learning environments
- Improved energy efficiency
- State of the Art safety and security features
- Consolidation of all Pre-K into one location



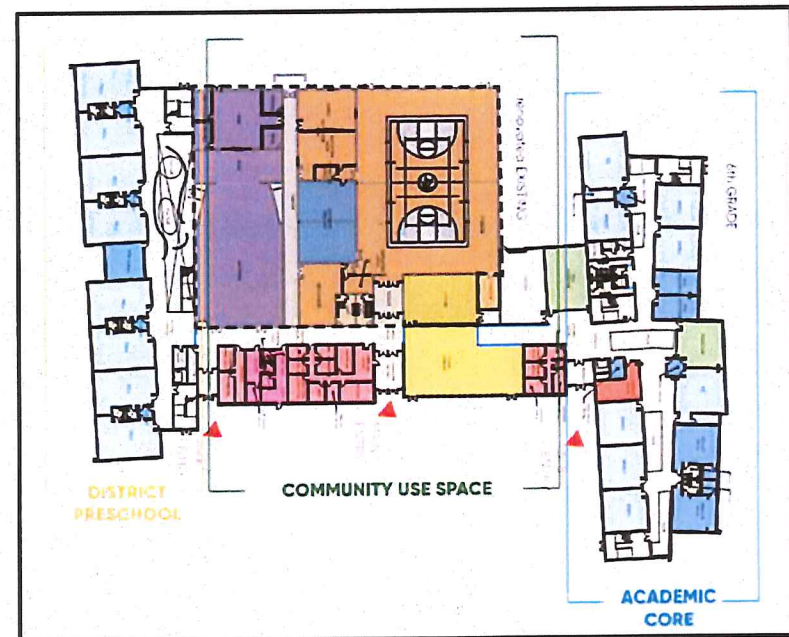
# Project Scope (cont.)

**State-of-the-art core curriculum teaching and learning environments for:**

- Mathematics
- English
- Social Studies
- STEAM
- Sciences
- Visual and Performing Arts
- World Languages
- Teacher Collaboration

## **Primary Use Spaces:**

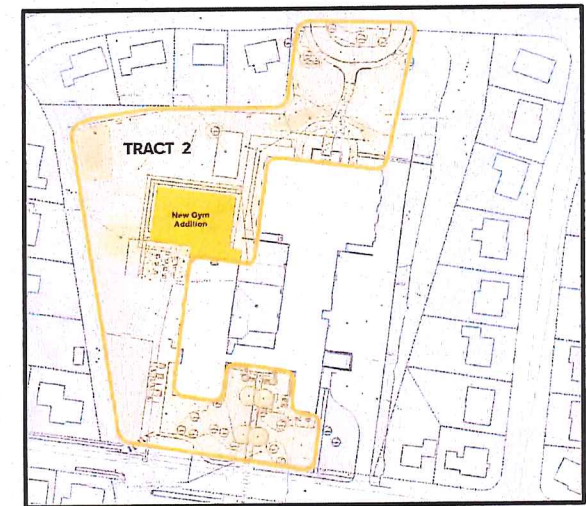
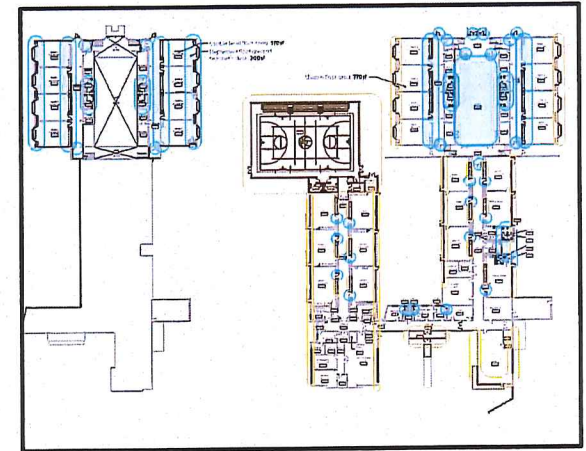
- Student Commons
- Media Center
- Auditorium
- Gymnasium
- Expanded Exterior Program





# The Scope – Waddington Elementary School

- Two Tracts of Improvements
  - Tract 1 – Bond Funded
    - New Full Heights Walls at 2-story
    - Security at Doors
    - Code Renovations to Rest Rooms
    - Code Renovations to Stairs
    - Code Renovations to Fire Alarm and Sprinklers
    - Air Source Heat Pumps and Dehumidification
  - Tract 2 – Subject to Future Funds
    - Gymnasium Addition
    - Site Improvements
    - Replace Exterior Windows and Doors
    - Upgrade Entry Vestibule



# The Scope – Capital Improvement Plan

- District Wide Improvements Funded Separately From Bond Projects
  - HVAC Upgrades
  - Roof Replacement
  - Window Replacement
  - Accessibility Upgrades
  - Code Upgrades



# Referendum Votes

## **Statewide - QUESTION 2**

A statewide ballot question to approve bonds to fund the expanded school construction program.

Question 2 will determine the amount of State reimbursement available for East Providence.

## **East Providence - QUESTION 4**

A ballot question only for East Providence voters to approve \$148 million in bonds to finance District Wide Improvements.

Question 4 will determine whether or not the project moves forward.

# For the latest updates on the project:

[EPbuildingcommittee.com](http://EPbuildingcommittee.com)



BuildEPHS



@BuildEPHS